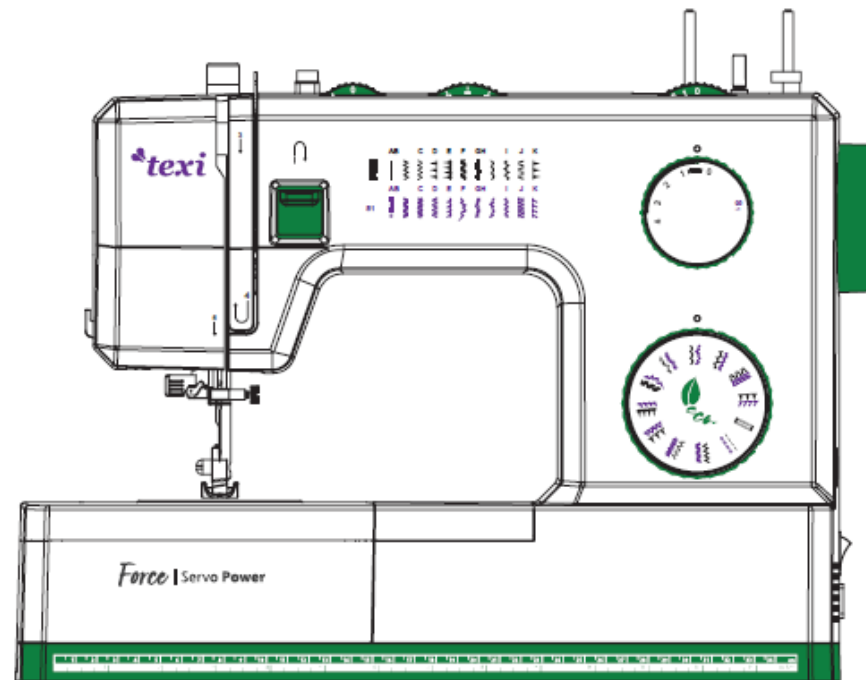


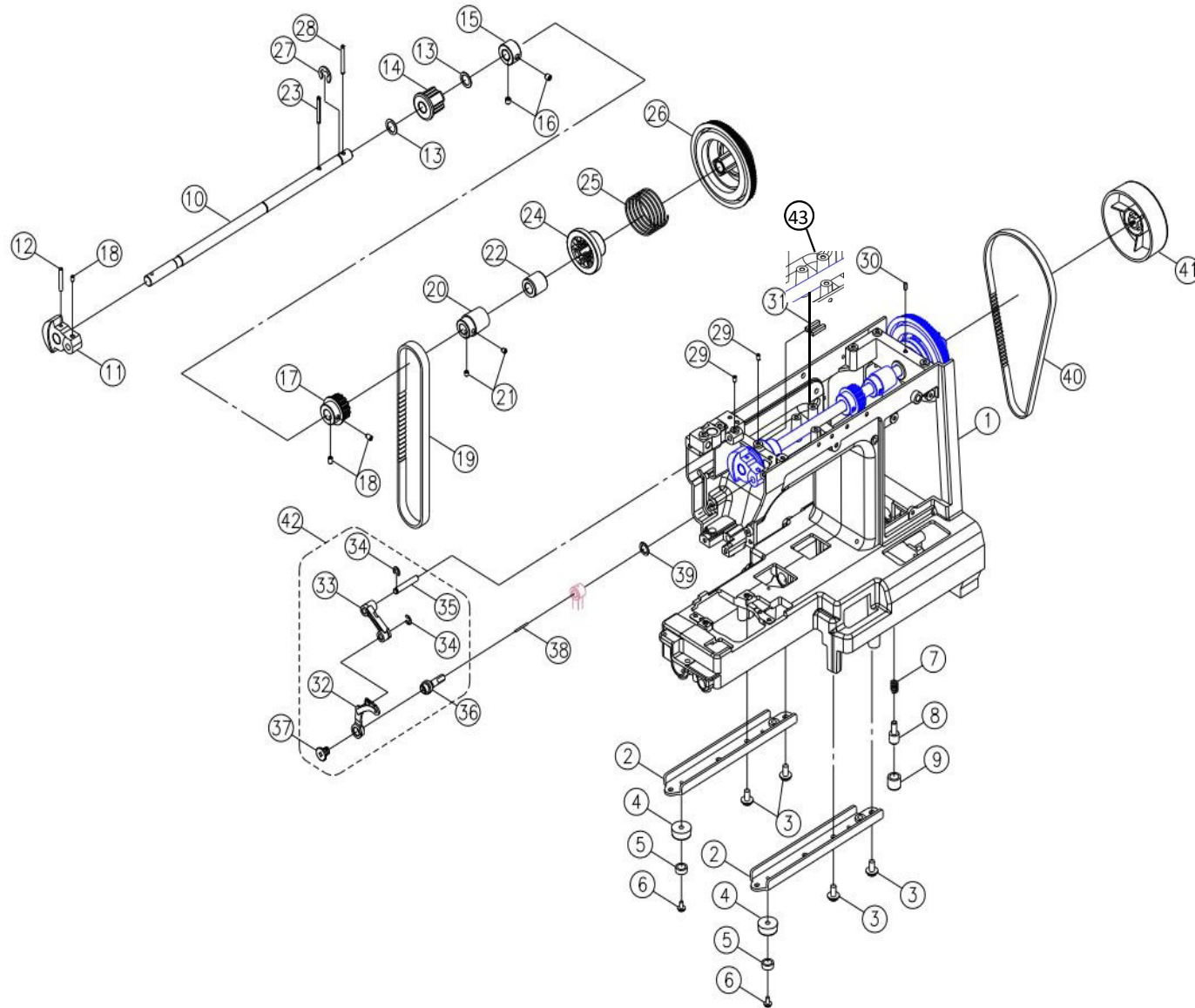
texi[®]

Culture of Sewing



Model Texi Force

Arm shaft, Thread take up lever

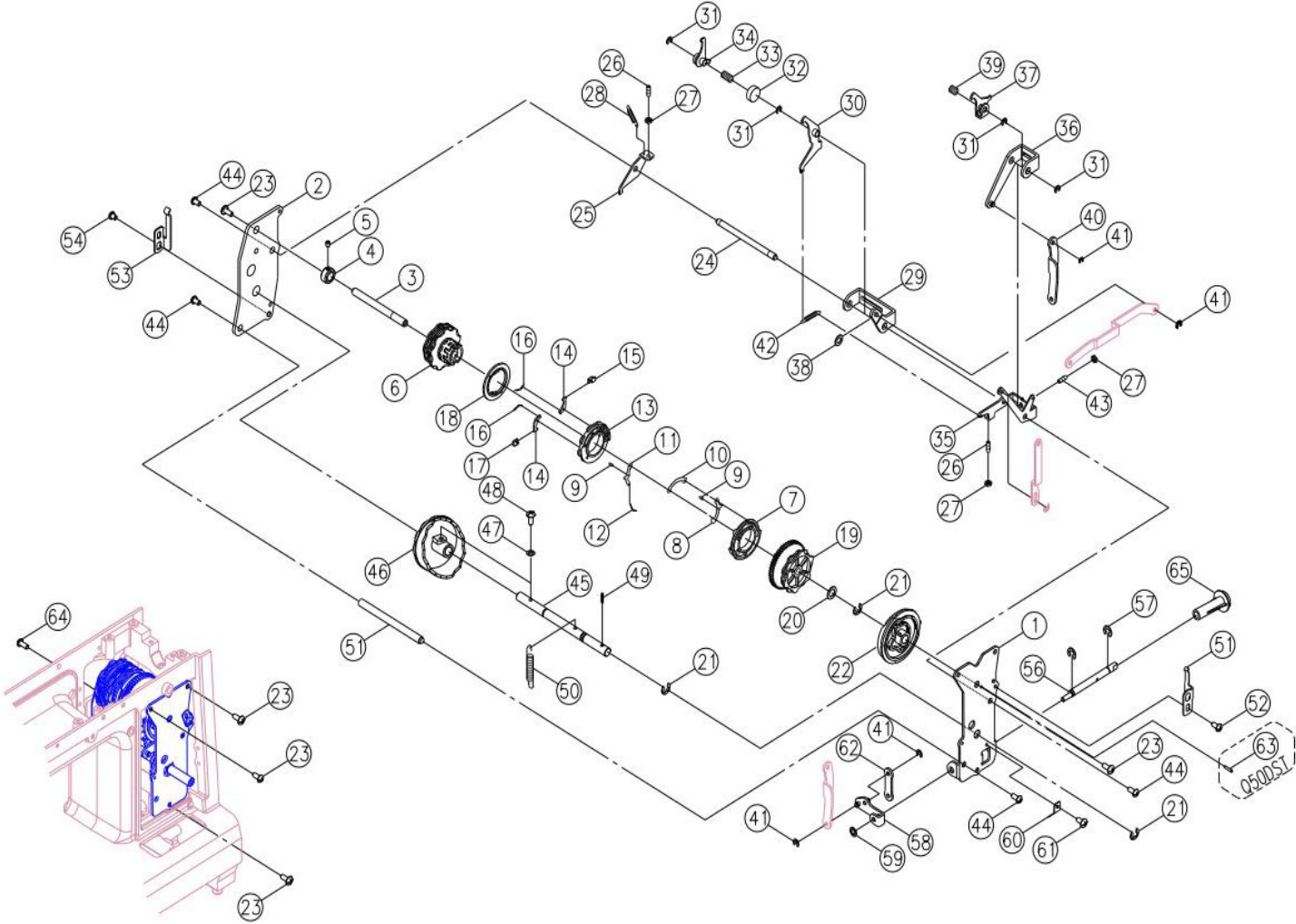


1. Arm shaft, Thread take up lever

NO.	Description	
1-1	Arm	
1-2	Free arm foot	
1-3	Set screw (M5×10)	
1-4	Free arm base cushion rubber	
1-5		(20100317)
1-6	Set screw(M4×8)	
1-7	Spring	
1-8	Adjustment screw	
1-9	Free arm base cushion	
1-10	Arm shaft	
1-11	Arm shaft balance	(20100316)
1-12	Arm shaft balance pin (f3.5×24)	
1-13	Endure attrition washer (10.2×15×0.5)	
1-14	Arm shaft busing	
1-15	Arm shaft collar	
1-16	Set screw(M5×5 C)	
1-17	Arm shaft sprocket	
1-18	Set screw(M4×6 C)	
1-19	Motor drive belt (83XL)	
1-20	Arm shaft worm	
1-21	Set screw(M4×4 C)	
1-22	Arm shaft busing	
1-23	Spring pin(*3×28)	
1-24	Am shaft oolkar	
1-25	Arm shaft clutch annulus spring	
1-26	Arm shaft driver belt pulley	(20100325)
1-27	1-27 E-Ring	(ETW-8)
1-28	Spring pin ×30	
1-29	Set screw(M4×5 C)	
1-30	Oil cotton	
1-31	Bobbin shaft oil cloth	
1-32	Thread take up lever	
1-33	Thread take up lever supporter	

NO.	Description
1-34	E-Ring (ETW-3)
1-35	Thread take up lever supporter shaft
1-36	Arm shaft balance pin complete
1-37	Set screw (9/64×40×5)
1-38	Oil cotton
1-39	Endure attrition washer (46.2×49.6×0.5)
1-40	Motor drive belt
1-41	Hand wheel
1-42	Thread take up lever complete
1-43	

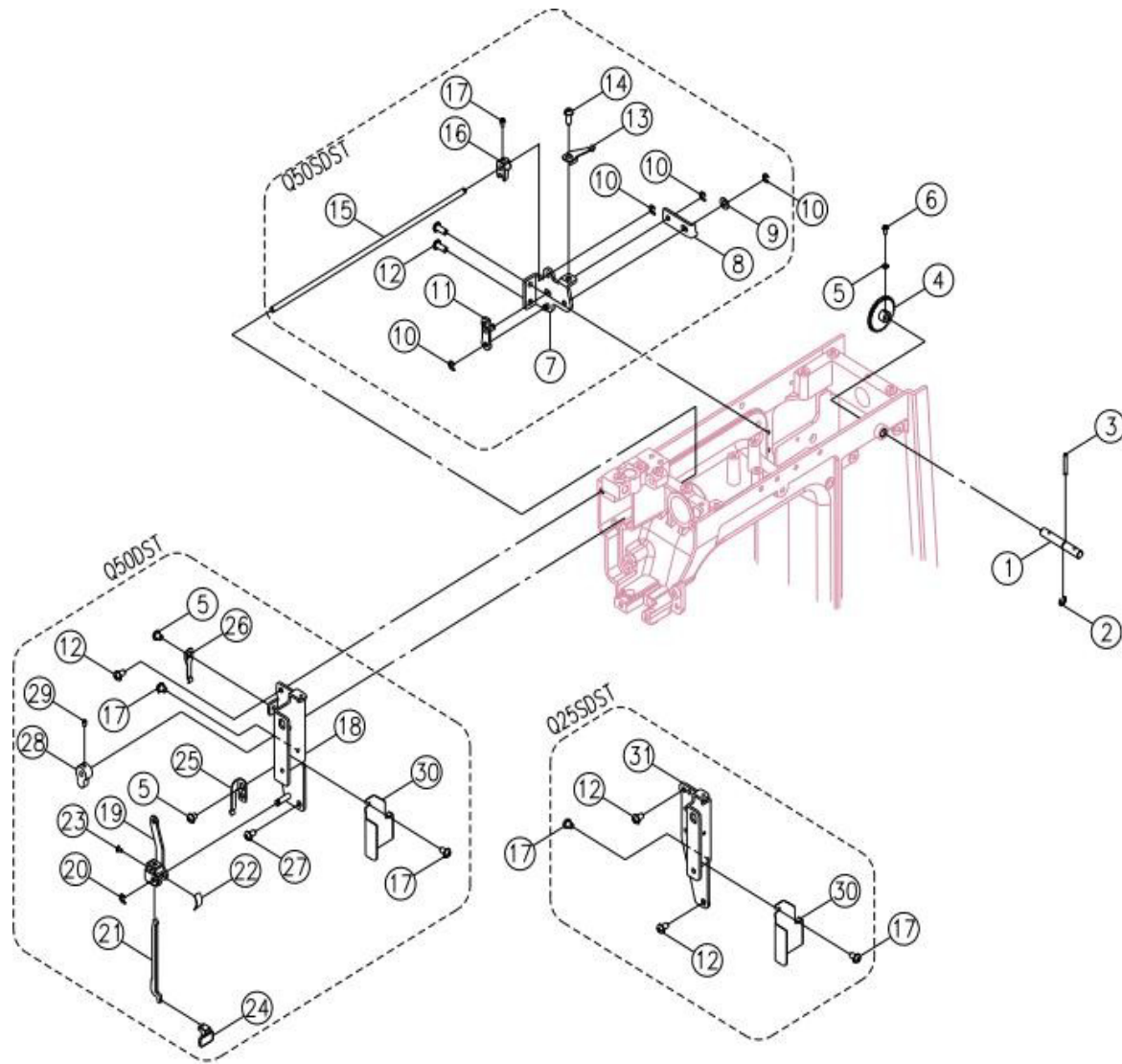
Pattern cam contact



2. Pattern cam contact

NO.	Description	NO.	Description
2-1	Pattern cam contact plate (front)	1-34	Zigzag cam contact
2-2	Pattern cam contact plate (back)	1-35	BH adjusting crank
2-3	Pattern cam shaft	1-36	SS cam contact supporter
2-4	Pattern cam shaft collar	1-37	SS cam contact
2-5	Set screw (M4×4 C)	1-38	Washer (f6.6×f14×1)
2-6	Pattern cam	1-39	SS cam contact spring
2-7	BH feed regulator cam	1-40	Feed rock shaft
2-8	BH clutch contact A	1-41	E-Ring (ETW-3)
2-9	BH clutch shaft	1-42	BH Feed crank spring
2-10	BH clutch lever	1-43	Set screw (M4×0.7 L12)
2-11	BH clutch contact B	1-44	Set screw (M3×8 B)
2-12	BH clutch spring plate	1-45	Pattern selector cam shaft
2-13	BH cam	1-46	Patten selector cam
2-14	BH contact	1-47	Washer (f4.2×49×0.5)
2-15	BH slide block R	1-48	Set screw (M4×10)
2-16	BH contact spring plate	1-49	Spring pin (φ2.5×16)
2-17	BH slide block L	1-50	Feed regulating crank spring
2-18	Straight stitch cam	1-51	Pattern cam contact supporter shaft
2-19	SS cam	1-52	Feed regulator fix plate
2-20	Washer (f8.2×φ14×0.5)	1-53	Set screw (M4×4 B)
2-21	E-Ring (ETW-6)	1-54	Pattern fix spring plate
2-22	Feed regulator cam	1-55	Set screw (M4×5 B)
2-23	Set screw (M4×8 A)	1-56	Trimming shaft
2-24	Zigzag cam contact supporter shaft	1-57	E-Ring (ETW-4)
2-25	Zigzag release plate	1-58	Adjusting plate
2-26	Set screw (M4×0.7 L9)	1-59	CS-ring (CSTW-4)
2-27	Nut (ALN-4)	1-60	Trimming shaft plate
2-28	Zigzag release plate spring	1-61	Set screw (M3×5 A)
2-29	Zigzag cam contact supporter	1-62	Feed regulating rod
2-30	BH Feed crank	1-63	Spring pin (o2.5×10)
2-31	E-Ring (ETW-5)	1-64	Set screw (M4×10 B)
2-32	Spring pedestal	1-65	Trimming dial
2-33	Zigzag cam contact spring		

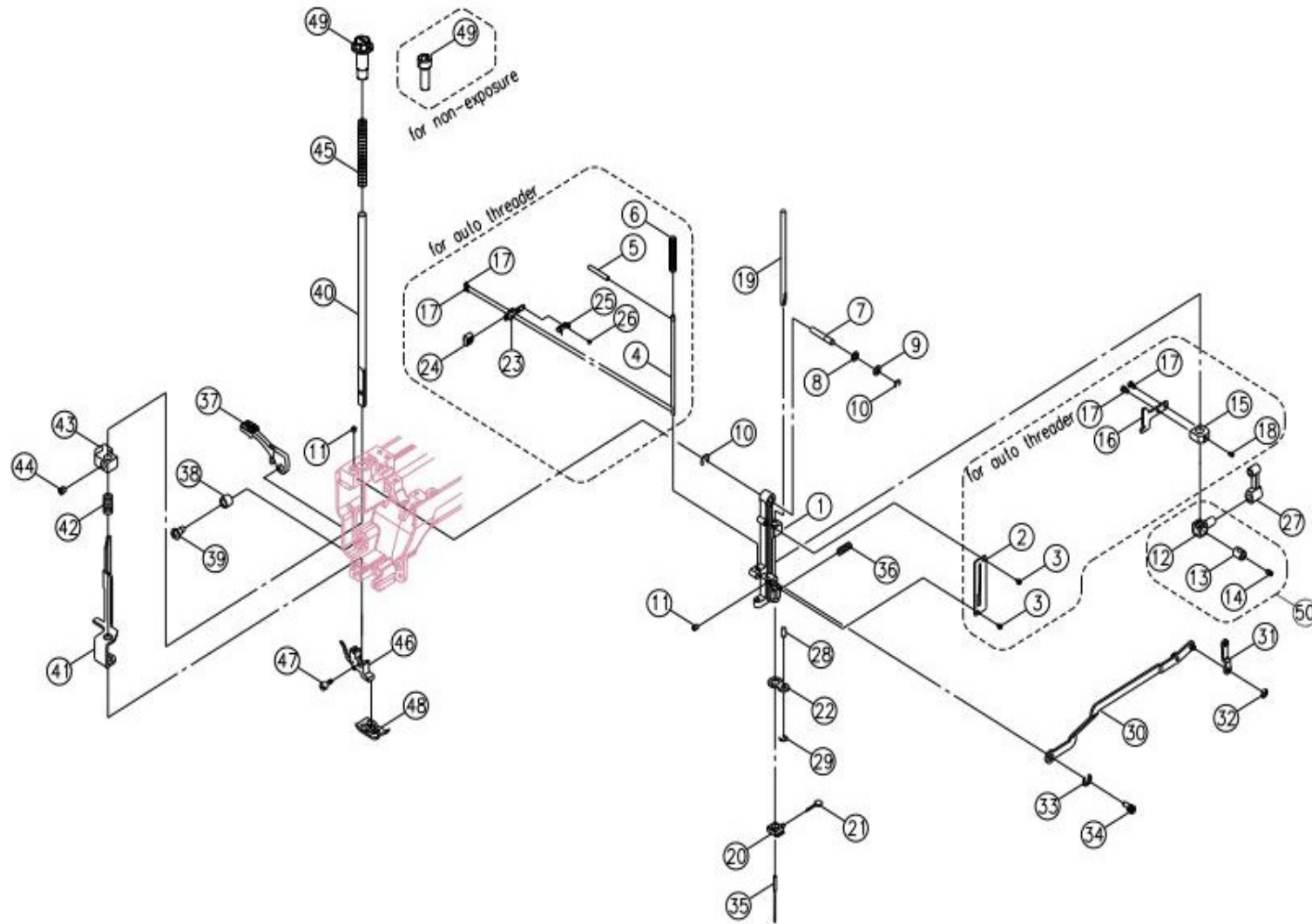
Feed regulator dial shaft, BH selector plate, BH lever plate



3. Feed regulator dial shaft, BH selector plate, BH lever plat

NO.	Description
3-1	Feed regulator dial shaft
3-2	E-Ring (ETW-5
3-3	Spring pin ($\phi 2.5 \times 16$)
3-4	Feed regulator gea
3-5	Washer ($3.2 \times 8 \times 0.8$
3-6	Set screw (M3 \times 8 B
3-7	BH selector plate
3-8	BH slide plate
3-9	Washer ($4.2 \times 9 \times 0.5$
3-10	E-Ring (ETW-3
3-11	BH selector plate
3-12	Set screw (M4 \times 6 B)
3-13	BH cam plate
3-14	Set screw (M4 \times 5B
3-15	BH select crank shaft
3-16	BH select crank
3-17	Set screw (M3 \times 5 B
3-18	BH lever plate
3-19	BH lever crank
3-20	E-Ring (ETW-3
3-21	BH leve
3-22	BH lever spring plate
3-23	Set screw (M2 \times 4 B)
3-24	BH lever button
3-25	BH positioned plate
3-26	BH positioned plate
3-27	Set screw (M4 \times 8 A)
3-28	BH movement crank
3-29	Set screw (M3 \times 3 C
3-30	Heat shield
3-31	Lamp bracket

Needle bar supporter, Presser bar

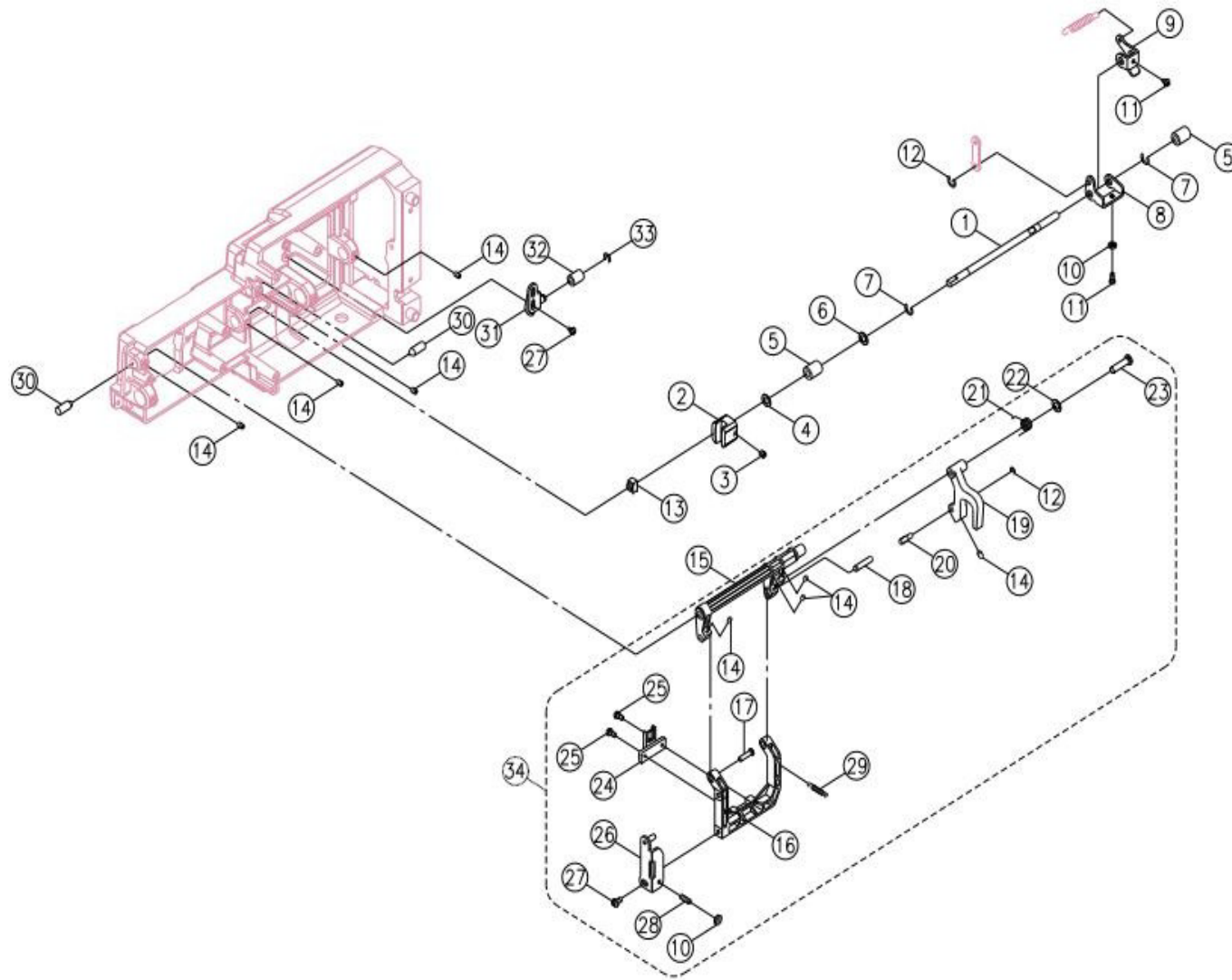


Needle bar supporter, Presser bar

NO.	Description
4-1	Needle bar supporter
4-2	Threading guide
4-3	Set screw (M3×6 A)
4-4	Threading shaft
4-5	Pin (o2×14)
4-6	Threading shaft spring
4-7	Needle bar supporter pin
4-8	Washer (WW-6
4-9	Washer (6.5×13×1)
4-10	E-Ring (ETW-4)
4-11	Set screw (M4×5 C)
4-12	Needle bar bracket (1)
4-13	Needle bar bracket (2)
4-14	Set screw (M4*4 C)
4-15	Threading stopper
4-16	Threading stop holder
4-17	Set screw (M2×4)
4-18	Set screw (M3*4 C)
4-19	Needle bar
4-20	Needle clamp
4-21	Needle clamp set screw
4-22	Needle bar supporter
4-23	Threading plate
4-24	Threading button
4-25	Threading shaft complete
4-26	Set screw (M1.6×3)
4-27	Needle bar crank rod
4-28	Needle bar supporter plate pin
4-29	E-Ring (ETW-4)
4-30	Needle bar driving rod
4-31	Zigzag width crank rod
4-32	E-Ring (ETW-3)

NO.	Description
4-33	E-Ring (ETW-5)
4-34	Needle bar driving rod pin
4-35	Needle
4-36	Needle bar supporter spring
4-37	Presser bar lifter lever
4-38	Presser bar lifter lever screw washer
4-39	Set screw (M4×10 B)
4-40	Presser bar
4-41	Tension lever lifter
4-42	Tension lever lifter spring
4-43	Presser bar bracket
4-44	Set screw (M6×5C)
4-45	Presser bar spring
4-46	Shank complete
4-47	Set screw (9/64×40×7.5
4-48	Zigzag presser foot (C)
4-49	Presser bar regulating screw
4-50	Needle bar bracket complete

Feed regulating, Feed rock shaft, Belt adjusting plate

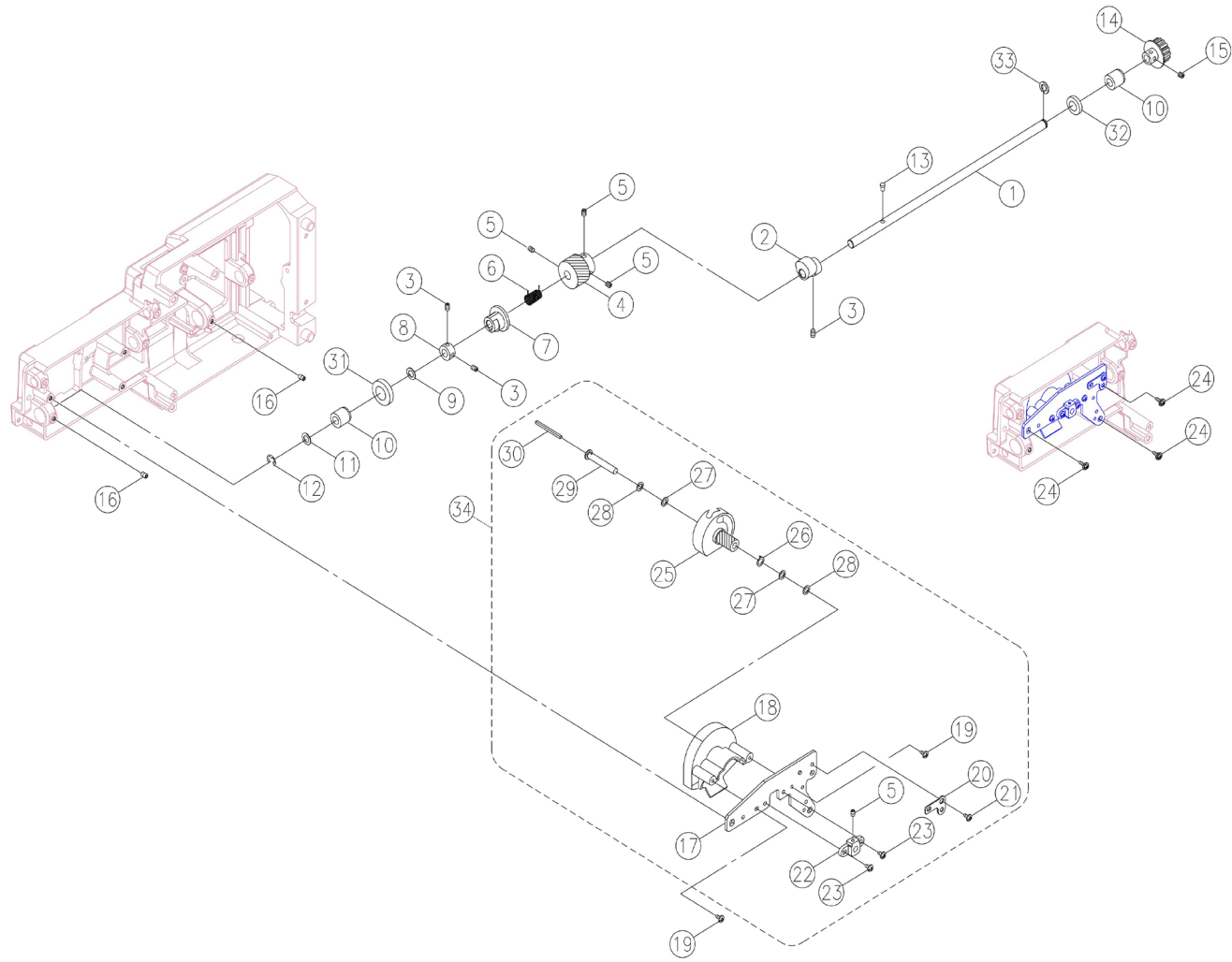


Feed regulating, Feed rock shaft, Belt adjusting plate

NO.	Description
5-1	Feed regulating shaft
5-2	Feed regulating
5-3	Set screw (M4×4 C)
5-4	Washer(6.7×11.8×0.5)
5-5	Feed rock bushing
5-6	Washer(6.7×12×1)
5-7	E-Ring(ETW-5)
5-8	Feed regulating crank
5-9	Feed crank
5-10	Adjusting nut (ALN-4)
5-11	Set screw(M4×10 B)
5-12	E-Ring(ETW-3)
5-13	Feed regulating block
5-14	Set screw(M4×6 C)
5-15	Feed rock shaft
5-16	Feed dog supporter
5-17	Feed dog shaft
5-18	Feed rock frame shaft (2)
5-19	Feed rock crank
5-20	Regulating block shaft
5-21	Feed rock crank spring
5-22	Washer (5.2×12×1)
5-23	Feed rock shaft
5-24	Feed dog
5-25	Set screw (M3.5×8 A)
5-26	Feed lifting rock crank
5-27	Set screw(M4×8A)
5-28	Set screw (M4×0.7 L9)
5-29	Feed dog spring
5-30	Feed crank shaft
5-31	Belt adjusting plate
5-32	Timing belt adjusting roller

NO.	Description
5-33	E-Ring (ETW-4)
5-34	Feed rock shaft complete

Lower shaft, Rotary hook

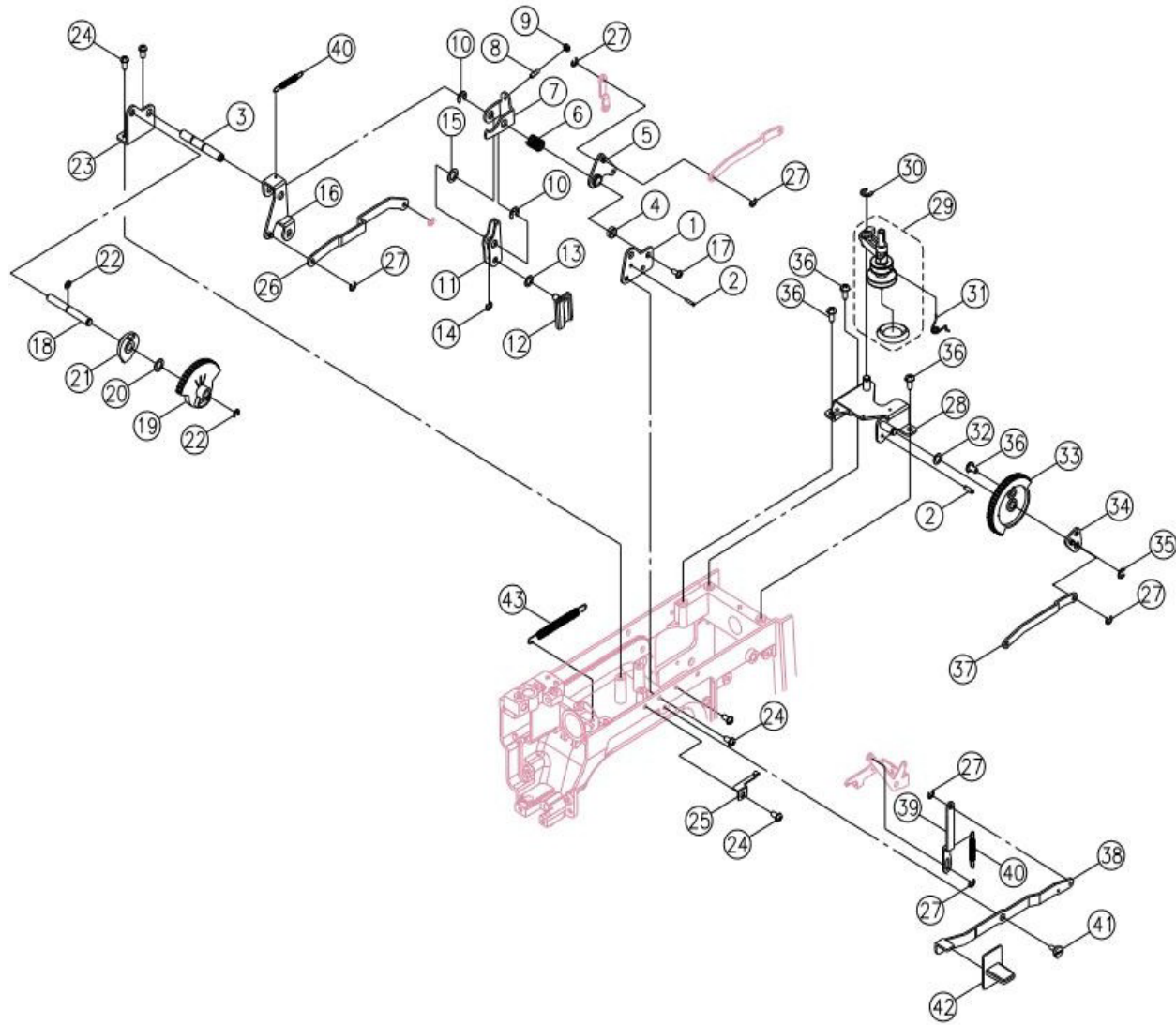


Lower shaft, Rotary hook

NO.	Description
6-1	Lower shaft
6-2	Feed rock cam
6-3	Set screw (M4×4 C)
6-4	Lower shaft gear
6-5	Set screw(M4×5 C)
6-6	Lower shaft spring
6-7	Feed lifting rock cam
6-8	Lower shaft collar
6-9	Endure attrition washer
6-10	Lower shaft bushing
6-11	Washer(8.2×12×0.5)
6-12	E-Ring(ETW-6)
6-13	Feed lifting rock com pin
6-14	Lower shaft belt pulley
6-15	Set screw(M3×14.5)
6-16	Set screw(M4×6C)
6-17	Rotary hook holder
6-18	Needle plate cover
6-19	Set screw(M3×12)
6-20	Rotary hook holder positioned plate
6-21	Set screw(M4×6B)
6-22	Rotary hook supporter
6-23	Set screw(M4×8A)
6-24	Set screw(M4×8)
6-25	Shuttle hook holder
6-26	Bobbin shaft washer (3)
6-27	Endure attrition washer
6-28	Bobbin shaft washer (2)
6-29	Bobbin shaft
6-30	Bobbin shaft oil cloth
6-31	Felt seal (f12.7*f18.7*t3.5
6-32	Felt seal (97.5\$13.5*t3.5)

NO.	Description
6-33	C-Ring(7.9\$11.9*t1.9)
6-34	Rotary hook holder complete

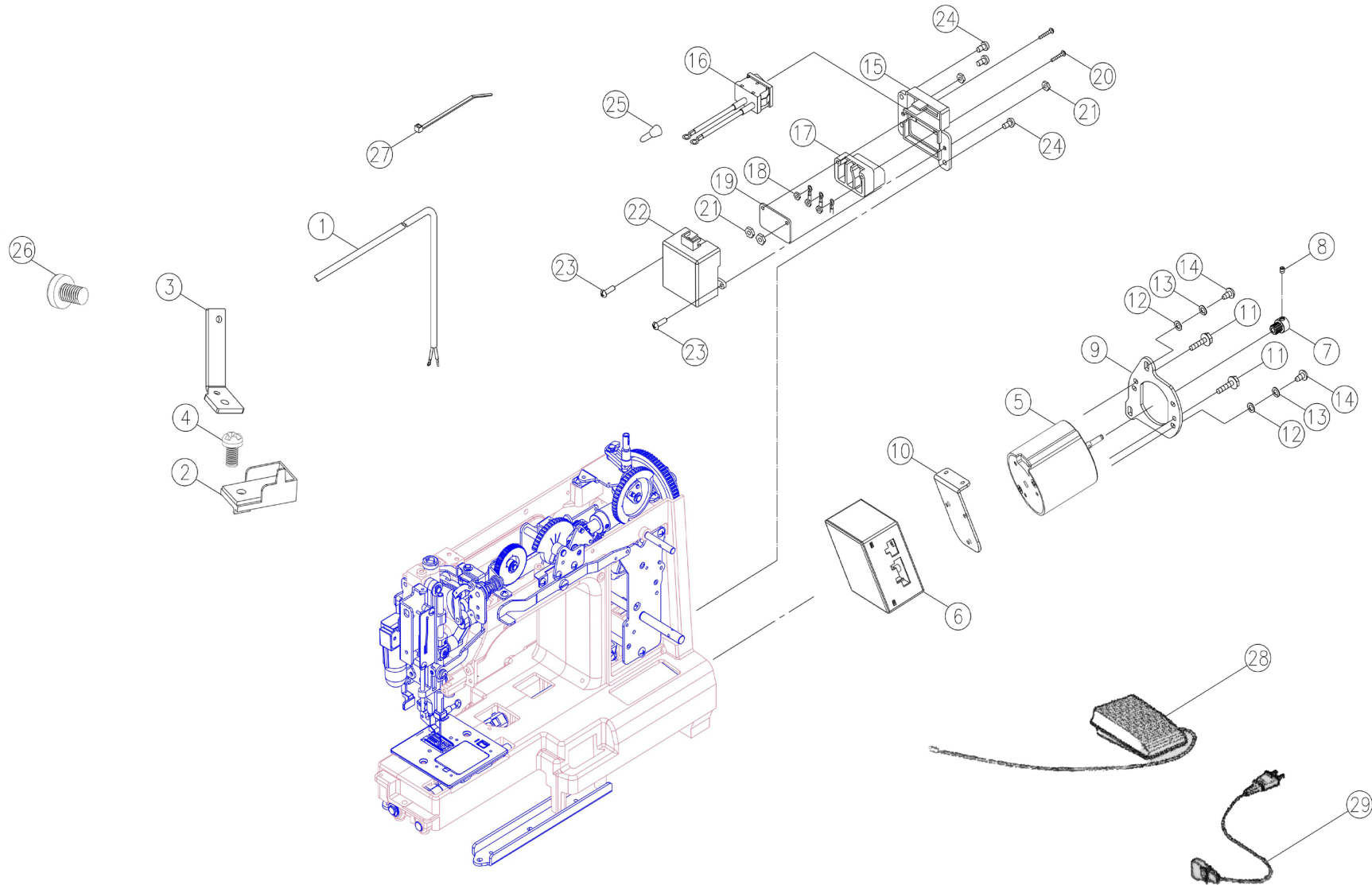
Needle position plate, Bobbin winder, Reverse lever



Needle position plate, Bobbin winder, Reverse lever

NO.	Description	NO.	Description
7-1	Needle position plate (front)	7-32	Washer (46.4 × φ 11 × 1 × 0.15)
7-2	Hand wheel bushing pin (中3 × 10)	7-33	Zigzag width dial
7-3	Needle position crank shaft	7-34	Zigzag regulator crank
7-4	Tube	7-35	E-Ring (ETW-4)
7-5	Zigzag width crank	7-36	Set screw (M4 × 8 A)
7-6	Tension lever lifter spring	7-37	Zigzag width adjustment rod
7-7	Needle position adjustment crank	7-38	Reverse lever
7-8	Set screw (M4 × 9)	7-39	Reverse rod
7-9	Set Nut (ALN-4)	7-40	Auto threaded lever spring
7-10	E-Ring (ETW-6)	7-41	Set screw (M4 × 4.5)
7-11	Needle position crank	7-42	Reverse button
7-12	Zigzag width regulating cam box	7-43	Needle position spring
7-13	Washer 0 × 0.2		
7-14	E-Ring (ETW-4)		
7-15	Washer (48.2 × φ 12 × 0.5)		
7-16	Amplitude crank		
7-17	Set screw (M4 × 6A)		
7-18	Needle position button shaft		
7-19	Needle position button		
7-20	Washer (φ 6.4 × φ 11 × 0.15)		
7-21	Needle position cam		
7-22	E-Ring (ETW-5)		
7-23	Needle position plate (back)		
7-24	Set screw (M4 × 6 B)		
7-25	Needle position plate		
7-26	Rod		
7-27	E-Ring (E-3)		
7-28	Bobbin winder frame plate complete		
7-29	Bobbin winder crank complete		
7-30	E-Ring (ETW-5)		
7-31	Bobbin winder crank spring		

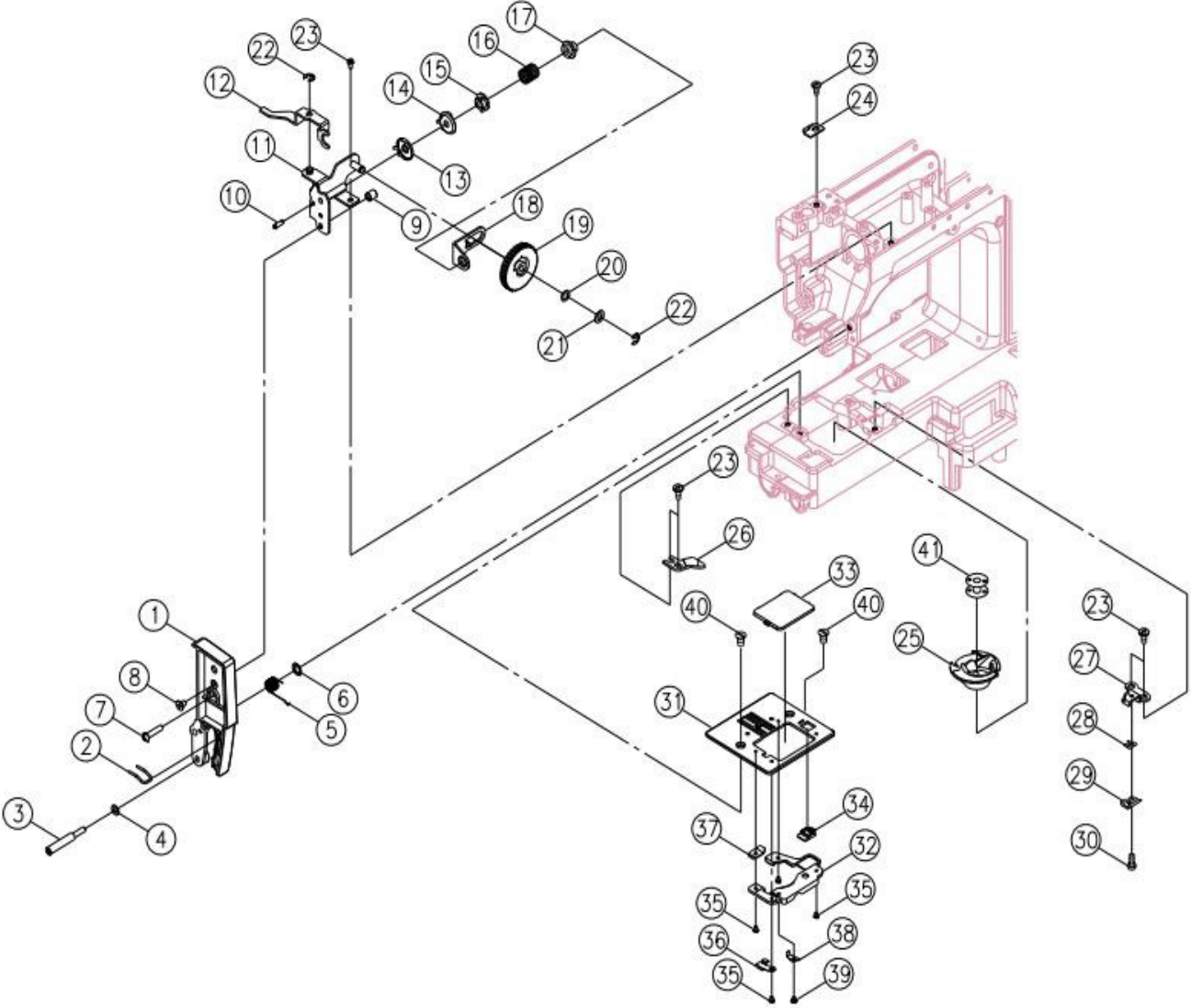
Motor & Lamp holder



Motor & Lamp holder

NO.	Description
8-1	Lamp holder complete
8-2	LED light
8-3	LED stand
8-4	LED fixing screw
8-5	Motor
8-6	Motor box
8-7	Belt wheel
8-8	Set screw (M3×3 C)
8-9	Motor bracket
8-10	Motor fixing plate
8-11	Set screw (M4×10.2)
8-12	Washer (5.4×10×0.9)
8-13	Spring washer (5.2×9×1)
8-14	Set screw (M5×12)
8-15	Receptacle holder
8-16	Switch ass'y
8-17	Receptacle
8-18	Nut (M3×4)
8-19	Concert insulation plate
8-20	Set screw (M3×20 B)
8-21	Nut (M3 t=2.3)
8-22	Receptacle holder cover
8-23	Set screw (M3×8 B)
8-24	Set screw (M4×10 A)
8-25	End termed
8-26	Set screw (M3×5 B)
8-27	Cord clip
8-28	Foot controller
8-29	Power cord

Dial tension, Rotary hook plate, Needle plate

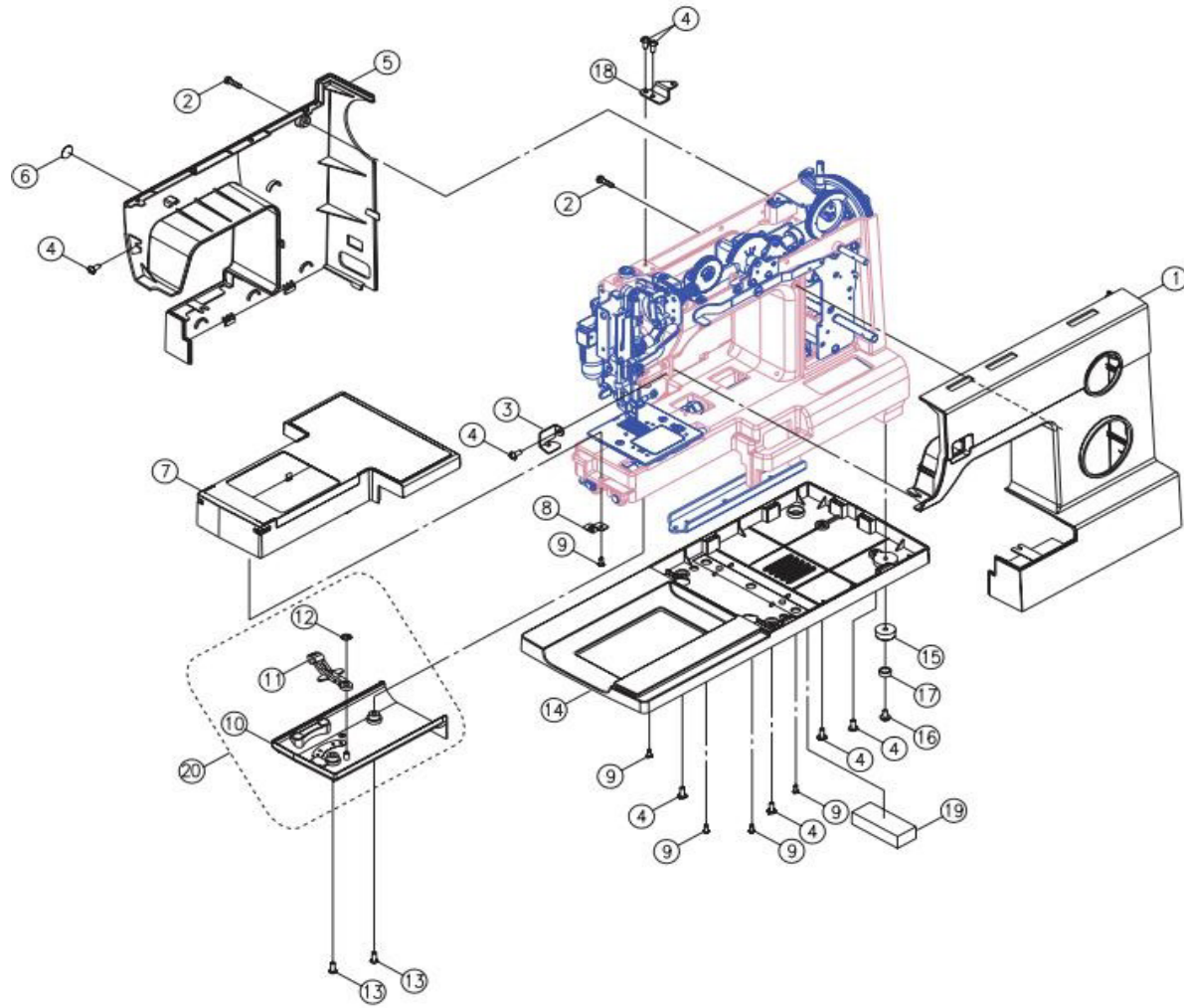


Dial tension, Rotary hook plate, Needle plate

NO.	Description
9-1	Dial tension supporter plate cover
9-2	Thread guide
9-3	Set screw (M4×0.7 L42)
9-4	Washer (4.2×8×0.8)
9-5	Dial tension spring
9-6	Thread guide spring washer (C-5)
9-7	Set screw (M4×15 B)
9-8	Set screw (M4×6)
9-9	Dial tension guide spring tube
9-10	Hand wheel bushing pin (3×10)
9-11	Dial tension supporter plate
9-12	Dial tension waft plate
9-13	Dial tension disc(1)
9-14	Dial tension disc
9-15	Dial tension spring regulator
9-16	Dial tension spring
9-17	Dial tension regulator
9-18	Dial tension spring plate
9-19	Dial tension knob
9-20	Washer (WW-5)
9-21	Washer (5.2×10×0.5)
9-22	E-Ring(E-4)
9-23	Set screw(M4×6B)
9-24	Tension lever regulating plate
9-25	Shuttle hook complete
9-26	Rotary hook plate
9-27	Rotary hook plate (2)
9-28	Rotary hook plate spring (2)
9-29	Rotary hook plate spring (1)
9-30	Set screw (M2×2.5)
9-31	Needle plate
9-32	Needle plate cover

NO.	Description
9-33	Needle plate cover
9-34	Needle plate cover open
9-35	Set screw (M2×3)
9-36	Needle plate spring
9-37	Needle plate cover plate
9-38	Needle plate cover spring
9-39	Set screw(M2.5×3)
9-40	Set screw (M4×6)
9-41	Bobbin

Front cover, Back cover, Free arm slab, Free arm base, Base cover



Front cover, Back cover, Free arm slab, Free arm base, Base cover

NO. Description

3-32 Front cover

3-33 Set screw (M4x10 B)

10-3 Arm top cover thread guide plate

10-4 Set screw (M4x8 A)

10-5 Back cover

10-6 Plate(1

10-7 Free arm slab (below)

10-8 Bracket

10-9 Set screw(M3x8.5)

10-10 Free arm slab(above)

10-11 Free arm base

10-12 Tooth lever arm

10-13 CS-ring (CSTW-4.5)

10-14 Set screw (M4x12 B)

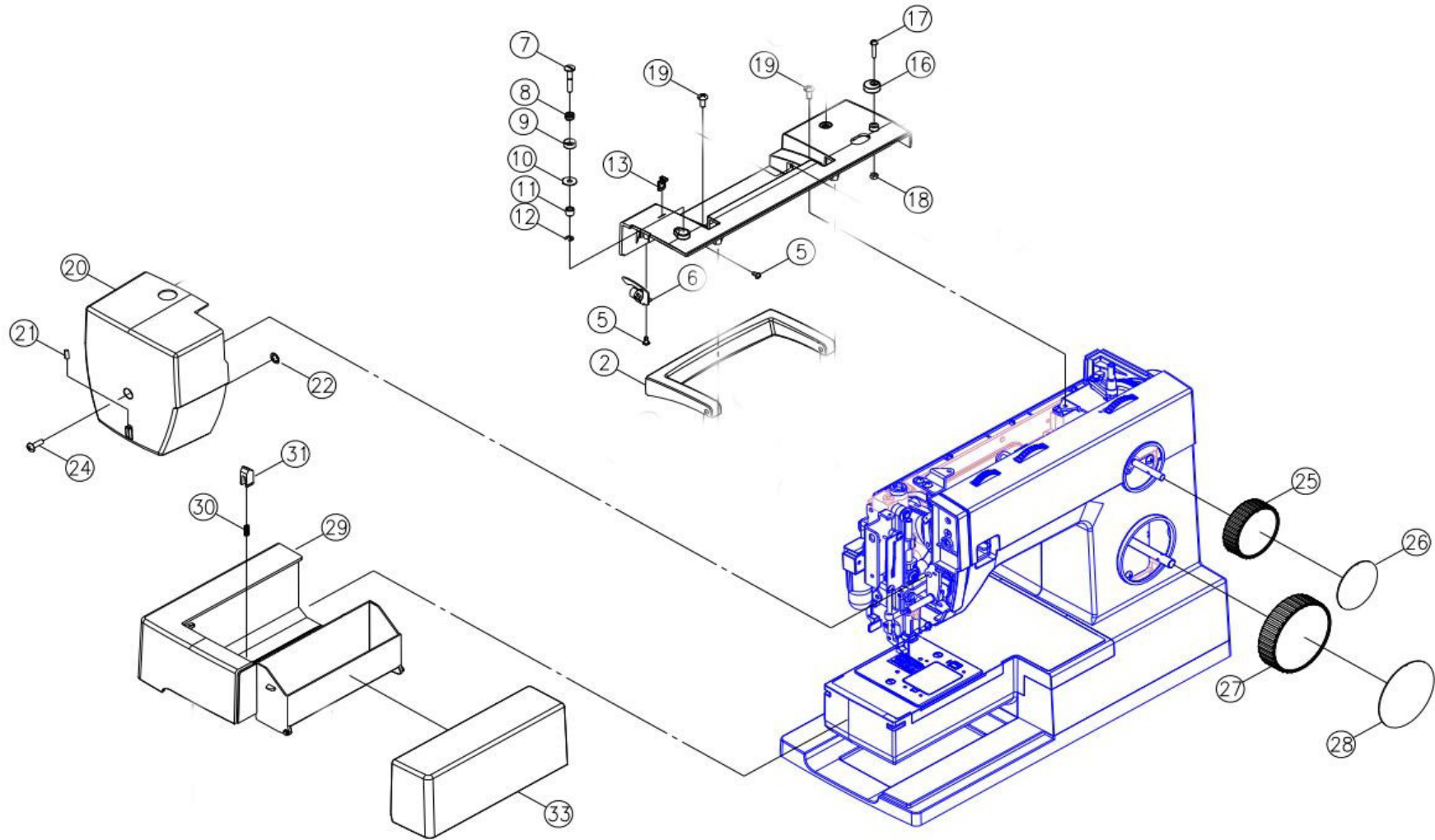
10-15 Base cover

10-16 Free arm base cushion rubber

10-17 Set screw(M4×8)

10-18 Arm top cover bracket

Arm top cover, Face plate, Stitch length dial, Selector dial, Sewing table



4. Arm top cover, Face plate, Stitch length dial, Selector dial, Sewing table

NO. Description

11-2 Handle
11-6 Thread guide Complete
11-7 Bobbin winder thread guide adjusti
11-8 Bobbin winder thread guide spring
11-9 Bobbin winder spring disc
11-10 Bobbin winder thread guide
11-11 Spacer
11-12 E-Ring (ETW-3
11-13 Thread guide
11-14 Spool pin base

11-16 Bobbin winde
11-17 Set screw (9/64×40×16)
11-18 Nut (9/64×40 t=3
11-19 Set screw (M4×8 A
11-20 Face plat
11-21 Cutter
11-22 CS-ring (CSTW-5

11-24 Set screw (M4×11.5 A)
11-25 Stitch length dia
11-26 Stitch length dial pane
11-27 Selector dial
11-28 Selector dial pane
11-29 Sewing table body
11-30 Sewing table body guide spring
11-31 Sewing table body quide

NO. Description

11-33 Sewing table body cover